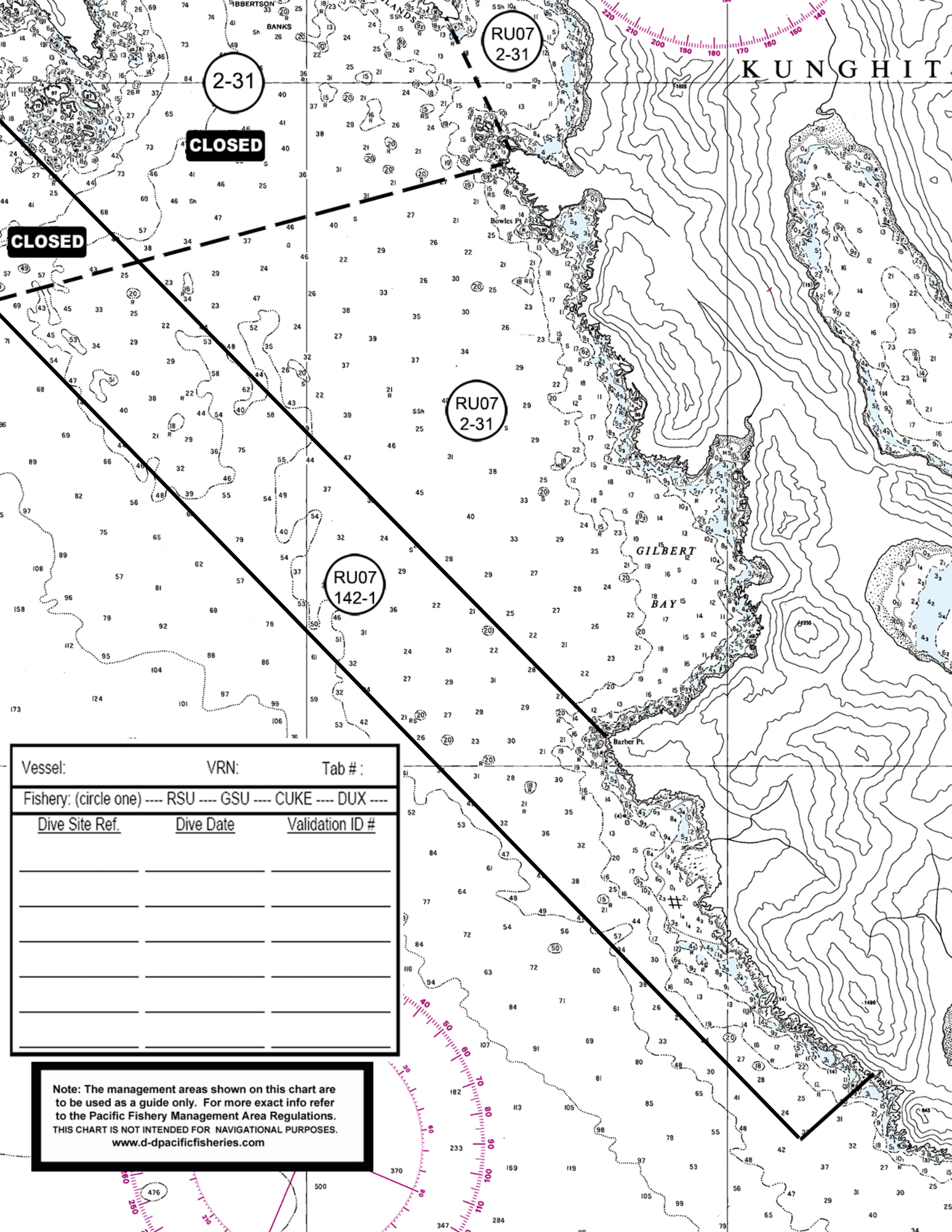


**RU07 Lower 2W**

142-1

RED SEA URCHIN FISHERY	
RU07 - Lower 2W	
1	Subareas 2-32 and 2-33.
2	Subareas 2-31 and 2-34 except closures.
3	That portion of Subarea 142-1 south of a parallel passing through 52 degrees 09 minutes north latitude.
Note: Head of Louscoone Inlet, South Kungnit Island and Wailing (Anthony) Island closure descriptions are listed in Appendix 1, Section 5 of the Integrated Fisheries Management Plan. See Appendix 15 for closure map.	

**\*Shaded areas indicate open subarea(s)**



2-31

**CLOSED**

RU07  
2-31

**CLOSED**

RU07  
2-31

RU07  
142-1

Vessel:	VRN:	Tab #:
Fishery: (circle one) --- RSU --- GSU --- CUKE --- DUX ---		
<u>Dive Site Ref.</u>	<u>Dive Date</u>	<u>Validation ID #</u>

**Note:** The management areas shown on this chart are to be used as a guide only. For more exact info refer to the Pacific Fishery Management Area Regulations. THIS CHART IS NOT INTENDED FOR NAVIGATIONAL PURPOSES. [www.d-pacificfisheries.com](http://www.d-pacificfisheries.com)

**CLOSED**

2-34

RU07  
2-33

RU07  
2-32

RU07  
2-31

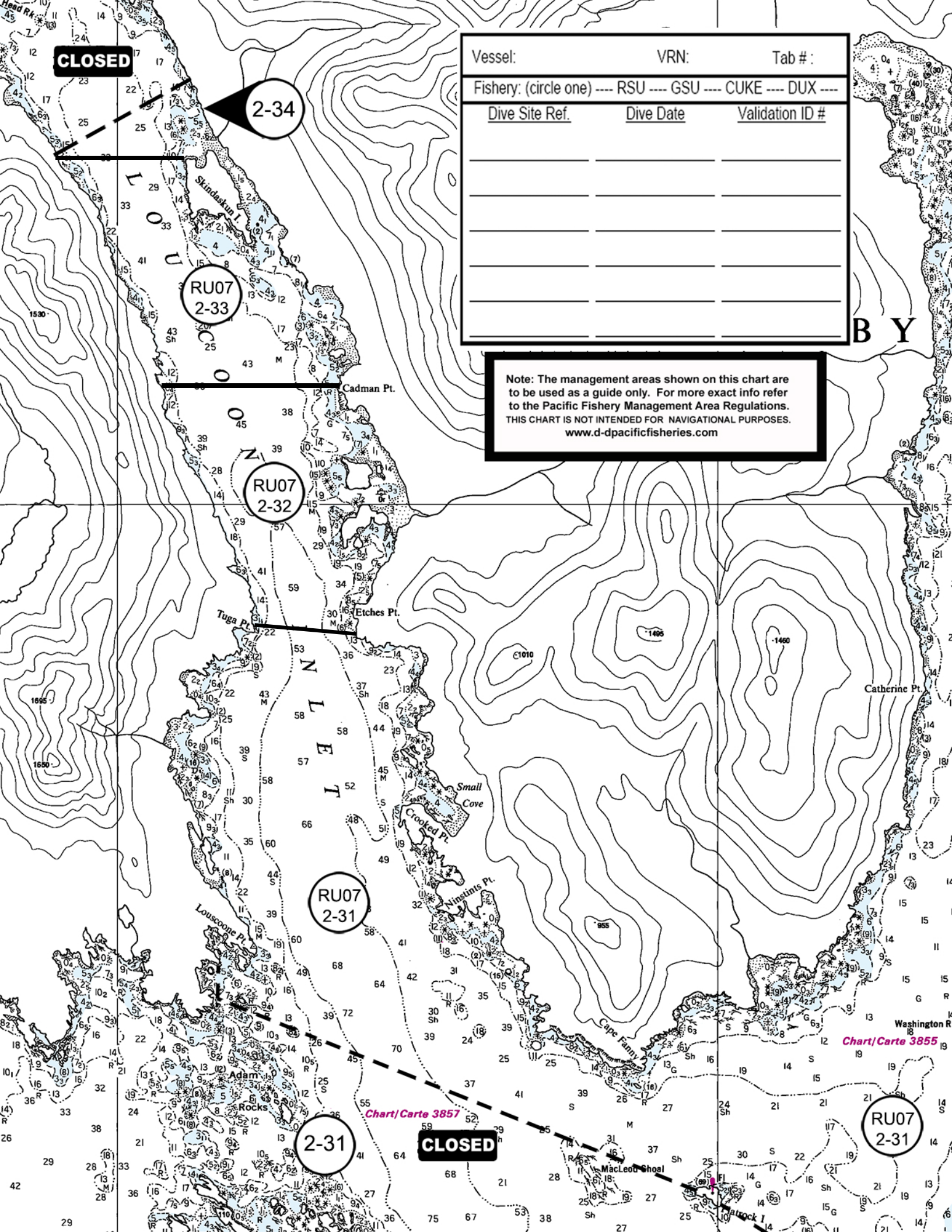
2-31

**CLOSED**

RU07  
2-31

Vessel:	VRN:	Tab #:
Fishery: (circle one) --- RSU --- GSU --- CUKE --- DUX ---		
<u>Dive Site Ref.</u>	<u>Dive Date</u>	<u>Validation ID #</u>

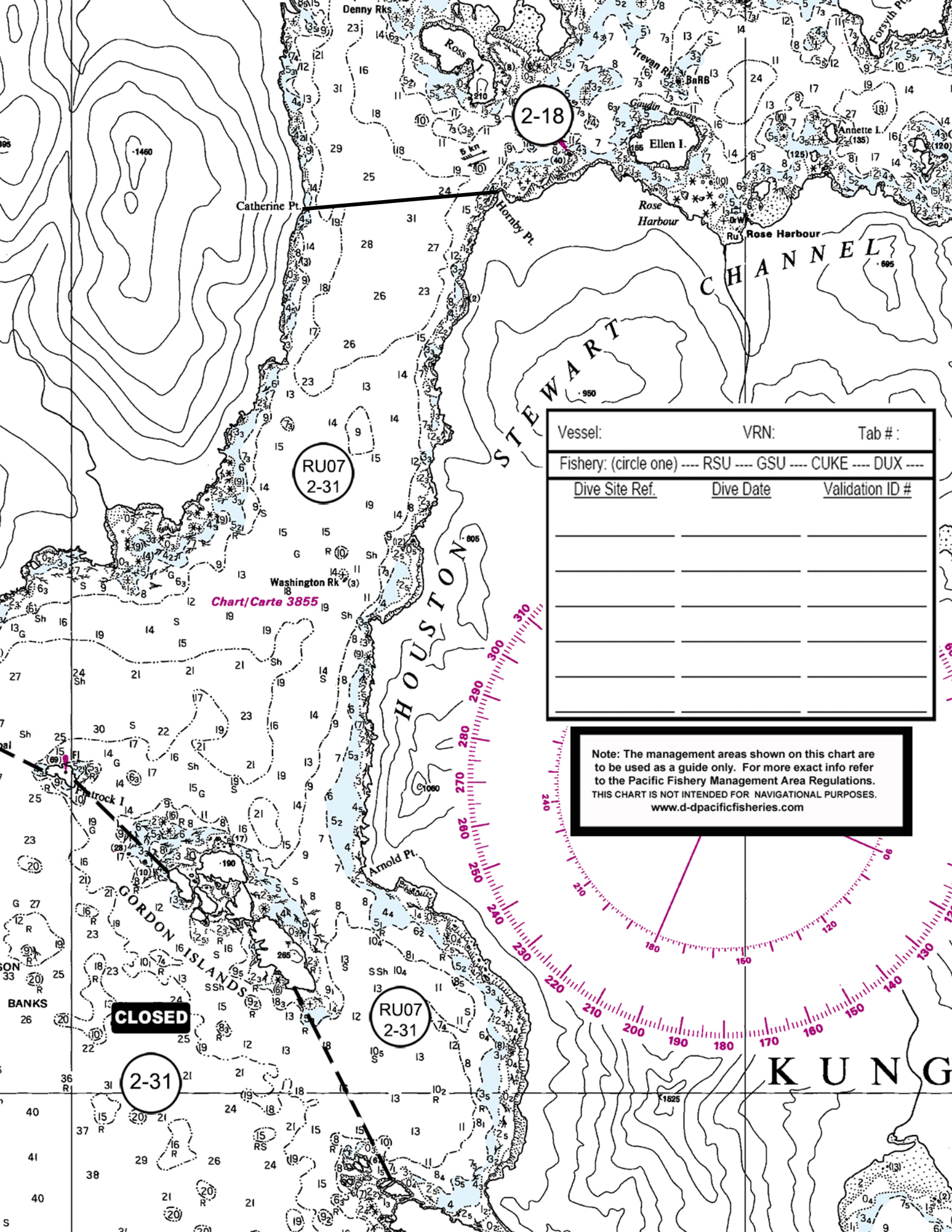
Note: The management areas shown on this chart are to be used as a guide only. For more exact info refer to the Pacific Fishery Management Area Regulations. THIS CHART IS NOT INTENDED FOR NAVIGATIONAL PURPOSES. [www.d-pacificfisheries.com](http://www.d-pacificfisheries.com)



B Y

Chart/Carte 3855

Chart/Carte 3857



Vessel:	VRN:	Tab #:
Fishery: (circle one) --- RSU --- GSU --- CUKE --- DUX ---		
<u>Dive Site Ref.</u>	<u>Dive Date</u>	<u>Validation ID #</u>

Note: The management areas shown on this chart are to be used as a guide only. For more exact info refer to the Pacific Fishery Management Area Regulations. THIS CHART IS NOT INTENDED FOR NAVIGATIONAL PURPOSES. [www.d-ppacificfisheries.com](http://www.d-ppacificfisheries.com)

**CLOSED**

RU07  
2-31

2-18

RU07  
2-31

2-31

Chart/ Carte 3855